



# Startup Guide

How to install G-Trace.net on a Windows7 (32bit/64bit) computer

For G-MEN DR01·DR20·DR100

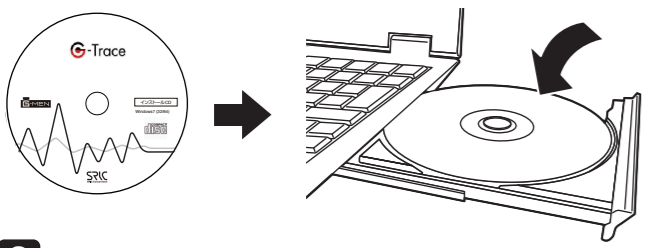
Be sure to install G-Trace.net according to the instructions herein. Failure to follow these instructions may result in faulty installation.



## Installing the software

\*Caution! Be sure to install the software prior to connecting G-MEN to your computer.

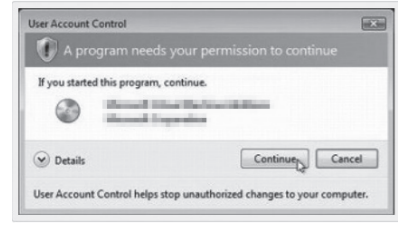
### 1 Place "G-Trace.net" in the CD-ROM drive



### 2 Run the Installation menu



Click "Run InstallMenu.exe".



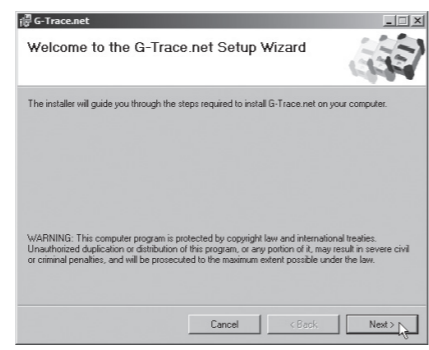
In the "User Account Control" window, click "Yes (Y)" for Do you want to allow the following program from an unknown publisher to make changes to your computer?

### 3 Installing G-Trace.net



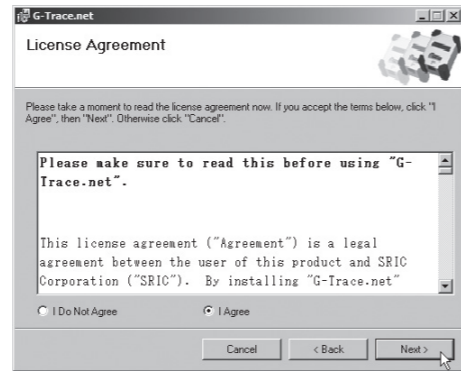
In the G-Trace.net Install Application window, click "Install G-Trace.net".

### 4 G-Trace.net Setup Wizard



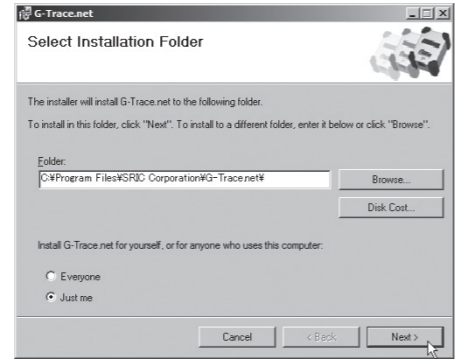
Click "Next (N)".

### 5 License Agreement



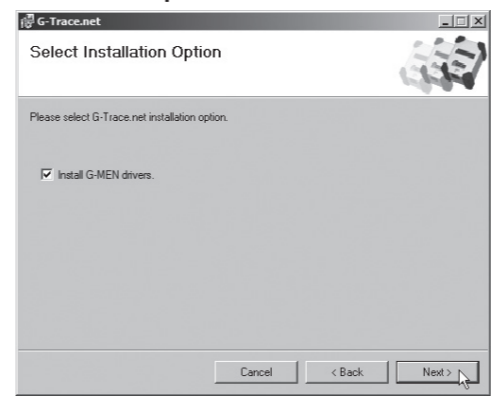
Read the License Agreement, and if you agree select "Agree" and click "Next (N)".

### 6 Select Destination Location



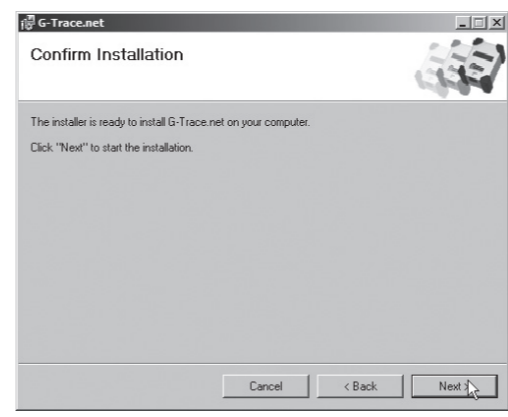
Select the folder to install "G-Trace.net". Select either "All Users" or "This User Only". Click "Next (N)".

### 7 Installation Options



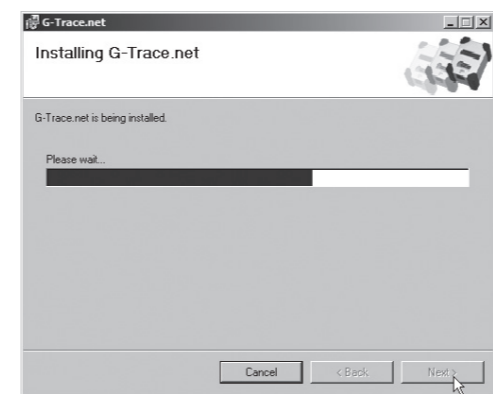
Click "Next (N)".

### 8 Prepare for Installation



Click "Next (N)".

### 9 Install "G-Trace.net".



"G-Trace.net" is being installed.

### 10 Start Device Driver Installation Wizard



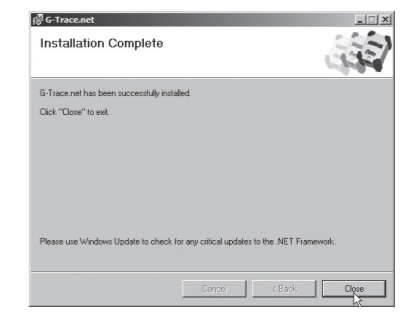
Click "Next (N)".

### 11 Complete Device Driver Installation Wizard



Click "Finish".

### 12 Complete Installation



Click "Close (C)".

### 13 See Shortcut Icon

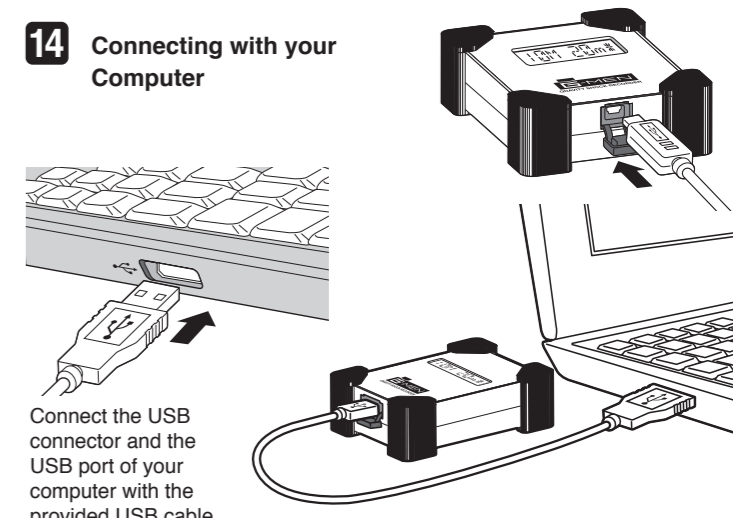


The "G-Trace.net" shortcut icon is created automatically on your desktop.

## Connecting with your Computer

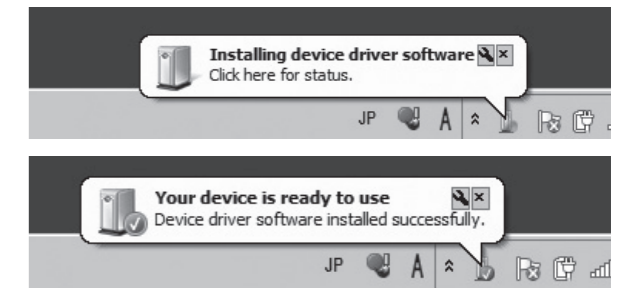
\*Caution! Use the provided USB cable to connect with your computer.

### 14 Connecting with your Computer



Connect the USB connector and the USB port of your computer with the provided USB cable.

### 15 Automatic Installation of the Device Driver



A popup will appear at the bottom right of your desktop.

# Beginner's Guide to G-Trace.net

## G-Trace.net

(For G-MEN DR01 · DR20 · DR100)

### Chapter 1 G-Trace.net and G-MEN

- 1 Launching and Connection
- 2 Connecting with Multiple G-MENS

### Chapter 2 Let's Try G-MEN

- 1 Configure Measurement Conditions with G-MEN
- 2 Start Measurement with G-MEN
- 3 Testing Jolts
- 4 Retrieve Recording Data from G-MEN
- 5 Save Retrieved Data of G-MEN

The User's Manual for G-Trace.net is provided as program HELP.

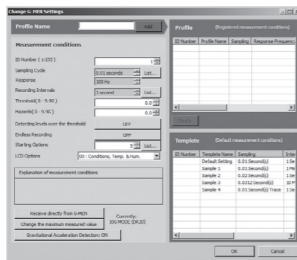
Described here is a simple guide to set up the G-MEN measurements with G-Trace.net

"Click to reveal the window shown below. You can configure optional G-MEN measurement conditions here.

Here we will use the default settings of the template."

Click the default settings of the template to show the measurement conditions below.

- ID Number [1]
- Sampling [0.01 seconds]
- Response Frequency [100Hz]
- Recording Interval [1 second]
- Threshold [0.0G]
- Hazards [0.0G]
- Detect Levels Over the Threshold [OFF]
- Endless Recording [OFF]
- Starting Options [5]seconds
- LCD Options [00]



"With the setup above, G-MEN will start recording one data per second 5 seconds after starting measurement according to the Starting Option.

The data recorded will be peak G-values of each of X, Y and Z axes out of 100 data collected every 10 msec and the date also include temperature and humidity within each recording interval of 1 second.

To change settings use the List Button or ▲▼ and determine the value.

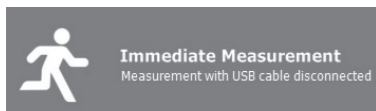
After you have finished configuration, click [OK] at the bottom left of the window to return to the Start Menu window.

Confirm the configured measurement conditions in the Start Menu window.

## 2 Start Measurement with G-MEN

You can select immediate measurement or scheduled measurement from the Start Menu window.

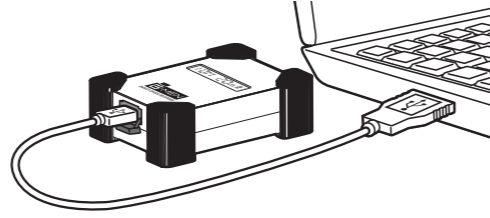
For immediate measurement click on the button below in the Start Menu



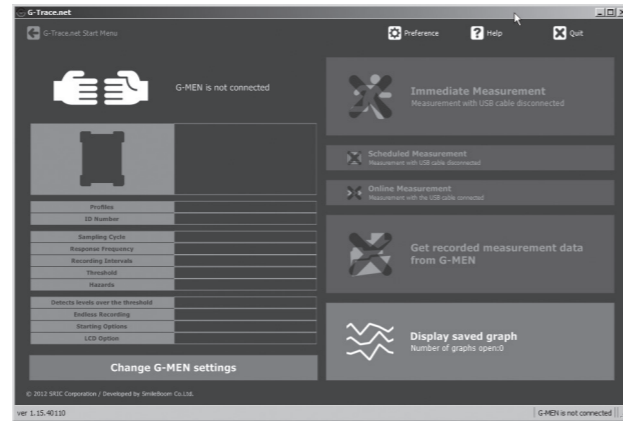
## Chapter 1 G-Trace.net and G-MEN

### 1 Launching and Connection

Launching G-Trace.net and connecting with G-MEN



You may connect the G-MEN with your computer either before or after launching G-Trace.net. It is also possible to launch the software without connecting at all.



Launch G-Trace.net by either selecting G-Trace.net from the Start Menu, or by clicking the shortcut icon on your desktop. (Start Menu window)

When G-MEN is connected, G-Trace.net will display the current connection status of G-MEN in both Start Menu/Data Display windows.

#### Start Menu Window

When G-MEN is not connected



When G-MEN is connected



Displays the connected type

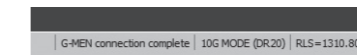


#### Data Display Window

The status bar when G-MEN is not connected



The status bar when G-MEN is connected



You can also see the type, connection status and the G-MEN RLS number on the status bar of the Start Menu window, [CoNNECTd] is displayed on the G-MEN LCD.

If the connection between G-MEN and G-Trace.net is not confirmed, disconnect and reconnect the USB cable. If the issue still persists, the USB driver may have had installation failure.

## 2 Connecting with Multiple G-MENS

G-Trace.net cannot take on multiple G-MENS. Even with separate USB ports available, only one G-MEN can be recognized.

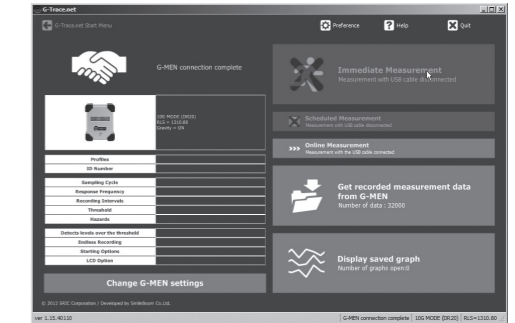
## Chapter 2 Lets Try G-MEN

Let's start with some simple measurements.

Make sure G-MEN and G-Trace.net are connected as shown in Chapter 1.

#### How it Works

- 1 Configure Measurement Conditions with G-MEN
- 2 Start Measurement with G-MEN
- 3 Testing Jolts
- 4 Retrieve Recording Data from G-MEN
- 5 Save Retrieved Data of G-MEN



## 1 Configure Measurement Conditions with G-MEN

Here we will use the default settings.

Connect G-MEN to your computer with the provided USB cable.

G-MEN Connection Complete will be displayed when your computer recognizes G-MEN.

Click [Change G-MEN Settings] at the bottom left of the window.



## 3 Testing Jolts

Shake G-MEN and/or knock against your desk for a couple of minutes. You do not need to keep moving it the entire time.

## 4 Retrieve Recording Data from G-MEN

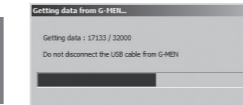
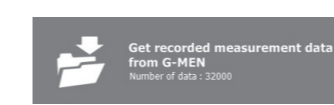
Reconnect G-MEN to your computer with the USB cable.

Confirm G-MEN is connected with G-Trace.net.

[CoNNECTd] will be displayed on the G-MEN LCD.

To retrieve data recorded on G-MEN click the [Get Measurement Recording Data] button in the G-Trace.net Start Menu window.

An indicator as shown below will appear in the middle of the screen while data is being retrieved.



The data list and graph are displayed in the Data Display window after retrieving data.

The number of data, sampling cycle, recording interval, threshold, ID number and hazards just recorded are shown in the Status Bar.

See if the date of the data list is displayed according to the date of measurement start and recording interval.

The data also shows the three axes, temperature and humidity.

The default unit for X, Y and Z axis is G. You can select from "G·m/sec<sup>2</sup>·Gal".

The formula to calculate resultant force is  $\sqrt{(X \times X) + (Y \times Y) + (Z \times Z)}$ . The minimum time unit is 10 msec.

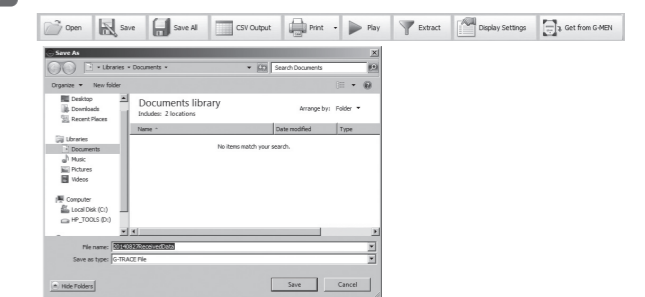
The number of data collected here will be 60 if measured for 1 minute.

Recording Interval 1 second x Recording Time = Number of Data

\*The number of data changes according to the configured recording interval and threshold.

\*The date is acquired from the computer. If the clock is incorrect, the date of data retrieved will also be incorrect.

## 5 Save Retrieved Data of G-MEN Select Save from the Menu.



Save Measurement Data dialog will be displayed. The file name is automatically created with the date, but can be changed to an optional file name.

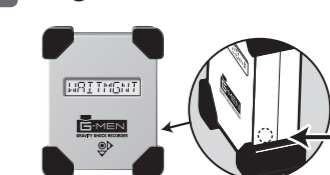
This completes the test.

## 6 Changing the Measurement Range of G-MEN

The maximum measurement value can be changed for G-MEN DR01 and DR20. (This does not apply for DR100)

Type	Default Settings	G and Resolution	When the Range has been Changed	G and Resolution
G-MEN DR01	1G	0.01G	2G	0.02G
G-MEN DR20	20G	0.2G	10G	0.1G

## 7 Magnetic Start



Starting Options 1~4 Where to place the provided magnet on G-MEN

Where to place the magnet

The Measurement Conditions windows will vary according to the items to be measured.