

**This recorder is capable of sensing even  
the slightest vibrations imaginable.**



(Actual size)

## **G-MEN DR01**

**Minute Vibrations**

**Ideal for recording the minute vibrations found with earthquakes or elevators.**

Created with micro-machine technology, the G-MEN unit has achieved both miniaturization and cost reduction thanks to its inbuilt ultra-compact 3-axis acceleration sensor. The G-MEN DR01 is capable of switching the 3-axis static acceleration value ranges between a 1G and a maximum of 2G, and is able to record with a maximum sampling period of 1msec. The body contains an inbuilt temperature and humidity sensor to allow the recording of the 3-axis acceleration/temperature, as well as temperature and humidity fluctuations over time. The body also contains an LCD panel which allows the user to check information such as recorded data and configuration settings. Using the "G-Trace.net" software included as standard,

recorded data can be easily transferred via the unit's USB interface to a PC. This allows instantaneous graphing or printing of data. The recorded data can be saved in CSV format for data analysis using spreadsheet software, tailored to your measurement needs. Traditionally, it was difficult to assess causes of damage in transit. However, now it is possible to instantaneously measure and record date/times and acceleration values when there is damage caused by vibration or dropping. For example: earthquake countermeasures and base isolation – it is a simple way to measure earthquake resistance as it is well suited for measuring the minute vibrations found in things like trains, cars, planes, ships and elevators.

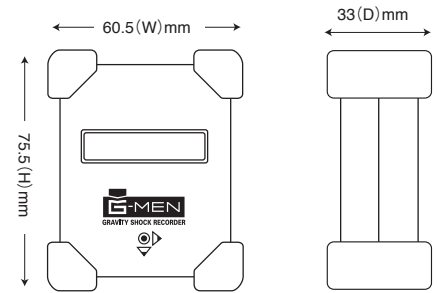
**Main Features**

- The body has a built in 3-axis (X, Y, Z) acceleration sensor for real time (1msec) recording.
- The acceleration sensor range can be switched between 1G and a maximum of 2G.
- The body has a built in temperature and humidity sensor for temperature and humidity recording.
- Contains three alkaline AAA batteries for approximately 50 days (Minimum sampling frequency 10msec) worth of recording.
- Recorded data can be exported via an internal USB interface.
- The "G-Trace.net" software, included as standard, can be used for instantaneous graphing of recorded data.
- The recorded data can be saved in CSV format for data analysis using spreadsheet software to meet your measurement needs.

**Main Specifications**

Model	G-MEN DR01	
Measured items	3-axis acceleration, Temperature and humidity	
Acceleration sensor	Static acceleration: ±2G (±10%)	Static acceleration: ±1G (±10%)
Frequency response	0Hz - 100Hz	
Minimum sampling frequency	1・2・5・10・20msec (Selectable)	
Measurement resolution	0.02G	0.01G
Temperature range	0 - 50°C (±3°C)	
Humidity range	30 - 90%RH (±10%RH)	
Measurement interval	1, 5, 10, 15, 20, 30 seconds; 1, 2, 3, 4, 5, 10, 15, 20, 30 minutes (Selectable)	
Recording capacity	65,500 data	
Operation display	LCD display	
Record retention	EEPROM	
Communication scheme	USB (MiniB)	
Power supply	AA alkaline batteries (LR6) × 2	
Battery life	Approximately 50 days (Depending on the measurement environment and battery performance)	
Operating temperature and humidity range	0 - 50°C, 70% RH or below (There should be no dew condensation)	
External dimensions	75.5(H) × 60.5(W) × 33(D) mm	
Weight	Approximately 135g (Including the batteries)	
Accessories	USB cable, AA alkaline batteries (2), Warning label (1), Metal fitting for attachment (1 set), Dedicated software (CD-ROM)	

**External dimensions**



**Options**



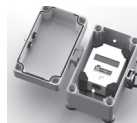
**External power source unit**

EPU-UT1  
EPU-UT2  
External dimensions: 111(H) × 81(W) × 50(D) mm  
Using an external power based unit allows it to continue running for long periods of time.  
EPU-UT1: Operation time with 2 size D alkaline batteries is about 10 months at a 10msec sampling interval. (approx.)  
EPU-UT1: Operation time with 2 size C alkaline batteries is about 4 months at a 10msec sampling interval. (battery life will differ depending on the usage conditions.)



**Warning labels (contains 60 sheets)**

Attach them to shipping boxes to further call attention to the person in charge of the shipping.



**Dust/water proof case**

A case specially designed for the G-MEN, with a protection grade of "IP65".  
Case external dimensions (excluding the legs) 75H × 97W × 125D

**Software specifications G-Trace.net (Software included as standard)**

Compatible models	G-MEN DR01, G-MEN DR20, G-MEN DR100			
Compatible operating systems	Microsoft Windows 10, 7 Japanese/English versions			
Channels	X-axis, Y-axis, Z-axis, temperature, humidity			
Communication function	Configuration settings, data reading, start conditions, online measurement			
Data storage	GTR (Dedicated extension) format, CSV format			
Graphical display	Condition setting screen, graph, data list			
Graph settings	Graph types	Line graph, bar graph	Printed line thickness	Two types
	Graph title	Unspecified	Displayed time	Time, elapsed time
	Graph line color	Unspecified	Graph	Enlarge, reduce
	Display line thickness	Two types	Copy	Graph copy

**⚠ For your safety.** Please make sure to thoroughly read the "User's Manual" and "Safety Precautions" before use, and be sure to always operate the device correctly.  
Note: Prices, specifications, and designs described in this catalog may be changed without prior notice.  
\* Windows 10, 7, OpenGL, and DirectX are registered trademarks of Microsoft Corporation of America in the United States of America and other countries.  
\* Other company names and product names listed are registered trademarks or trademarks of their respective companies.  
\* Specifications of this product may be changed without prior notice.

**Software included as standard**



This software is used to easily perform G-MEN condition setting and data processing.



G-MEN official website: [www.g-men.jp](http://www.g-men.jp)

**www.g-men.jp**

**info-box@g-men.jp**

Manufacturing, Sales Agency



**SRIC Corporation**

■ <http://www.sric.co.jp/> ■ [info-box@sric.co.jp](mailto:info-box@sric.co.jp)